



**1410/371 Little Lonsdale Street Melbourne VIC**

**2  2 **

The unique interior and finish of this residential apartment with its clean lines, flowing spaces and sophisticated palette, has been inspired by the architecture of Elenberg Fraser. 380 Melbourne elevates style, amenity and convenience to luxurious new heights.

**View** : <https://www.bradyresidential.com.au/lease/vic/inner-city/melbourne/residential/apartment/7591519>

Situated in the absolute heart of the CBD, this apartment features;

- ? Stylish and sleek kitchen with Miele Appliances
- ? Spacious living dining area
- ? Two bedrooms with built in robes
- ? Two modern bathrooms with high-end finishes
- ? European laundry
- ? Heating and cooling (living area & both bedrooms)
- ? Timber floors
- ? Security intercom access
- ? Concierge service (specified hours)



**Michael Carter**  
9603 1400



**Rita Song**  
96031400



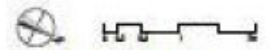
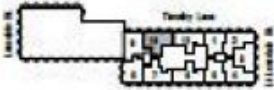
**APARTMENT: 1410**

2 Bedroom & 2 Bathroom  
Apartment Type C10  
AREA: 63.3 m<sup>2</sup>

Bay 1 (1)

Bay 2 (9)

Bay 3 (8)



**INDIVIDUAL APARTMENT PLAN**

Plans are indicative and may be varied in accordance with  
Contract of Sale. Furniture depicted is not included. Refer to  
the Contract of Sale for included fixtures & fittings. Area may  
not include ceiling. See Property Council of Australia's Method of  
Measurement for Residential Property.

Builder: A. Spiller: 6992301

