



4505/371 Little Lonsdale Street Melbourne VIC

1 1

The unique interior and finish of this residential apartment with its clean lines, flowing spaces and sophisticated palette, has been inspired by the architecture of Elenberg Fraser. 380 Melbourne elevates style, amenity and convenience to luxurious new heights.

View : <https://www.bradyresidential.com.au/lease/vic/inner-city/melbourne/residential/apartment/7644869>

Situated in the absolute heart of the CBD, this apartment features;

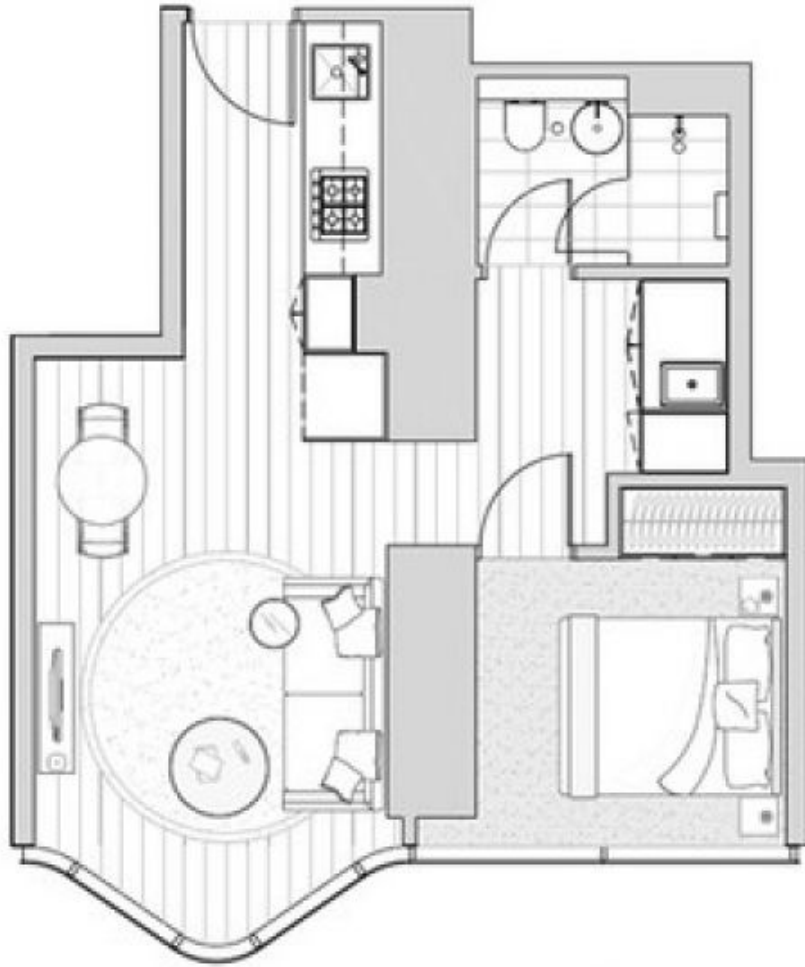
- ? Stylish and sleek kitchen with Miele Appliances
- ? Spacious living dining area
- ? One bedroom with built in robes
- ? Modern bathrooms with a high-end finish
- ? European laundry
- ? Heating and cooling (living area)
- ? Timber floors
- ? Security intercom access
- ? Concierge service (specified hours)



Marie Gilantzis
03 9603 1400

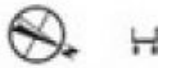


Rita Song
96031400



Bay 1 (7)

Bay 1 (1)



INDIVIDUAL

Plans are indicative as
Contract of Sale. From
the Contract of Sale to
calculated using the Pro
Measurement for Resid

Revision: A Updated: