



4905/28 Timothy Lane Melbourne VIC

3 2

The unique interior and finish of this residential apartment with its clean lines, flowing spaces and sophisticated palette, has been inspired by the architecture of Elenberg Fraser. 380 Melbourne elevates style, amenity and convenience to luxurious new heights.

View : <https://www.bradyresidential.com.au/lease/vic/inner-city/melbourne/residential/apartment/7790912>

Situated in the absolute heart of the CBD, this apartment features;

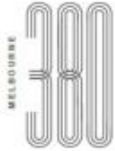
- ? Stylish and sleek kitchen with Miele Appliances, fridge & microwave incl
- ? Spacious living dining area
- ? Three bedrooms with built in robes
- ? Two bathrooms with high-end finishes
- ? European laundry, washer & dryer incl
- ? Heating and cooling (living area & bedrooms)
- ? Timber floors
- ? Security intercom access



Marie Gilantzis
03 9603 1400



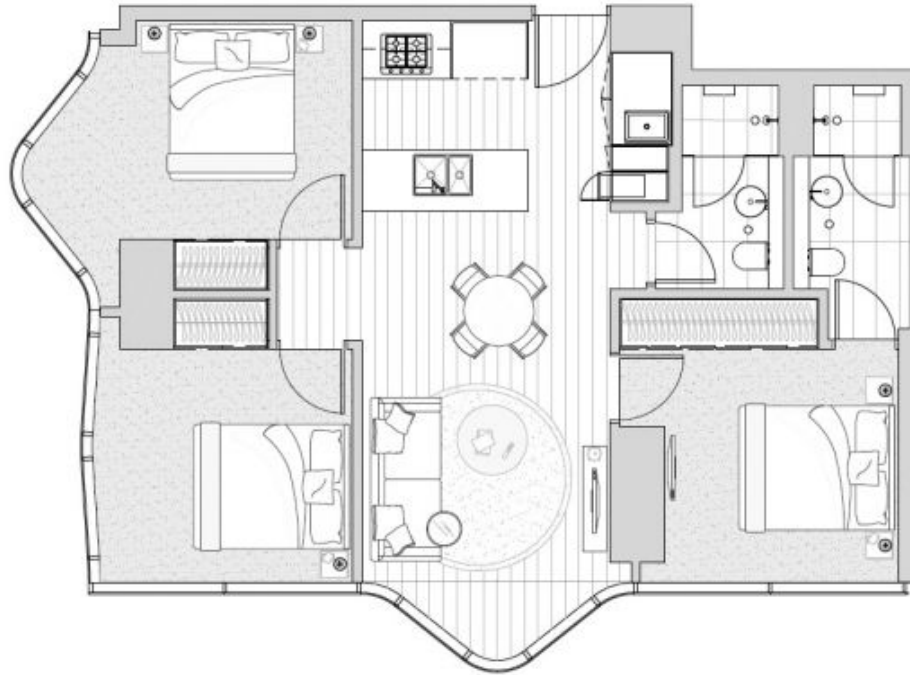
Rita Song
96031400



SOUTH TOWER
APARTMENT: 4905
3 Bedrooms & 2 Bathrooms
Apartment Type D2
AREA: 81.4 m²

Bay 1(8)

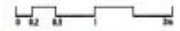
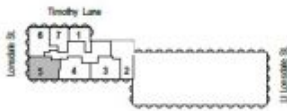
Bay 2 (2)



Bay 3 (1)

Bay 4 (8)

Bay 5 (1)



INDIVIDUAL APARTMENT PLAN

Plans are indicative and may be varied in accordance with Contract of Sale. Furniture depicted is not included. Refer to the Contract of Sale for included fixtures & fittings. Areas are calculated using the Property Council of Australia's Method of Measurement for Residential Property.

Revision: -- Updated: 08/02/18

