

**2801/371 Little Lonsdale Street Melbourne VIC**

1 1

The unique interior and finish of this residential apartment with its clean lines, flowing spaces and sophisticated palette, has been inspired by the architecture of Elenberg Fraser. 380 Melbourne elevates style, amenity and convenience to luxurious new heights.

Situated in the absolute heart of the CBD, this apartment features;

- ? Stylish and sleek kitchen with Miele Appliances
- ? Spacious living dining area
- ? One bedroom with built in robes
- ? Modern bathroom with high-end finishes
- ? European laundry
- ? Heating and cooling (living area)
- ? Timber floors
- ? Security intercom access
- ? Concierge service (specified hours)
- ? Gymnasium, steam room & sauna

**View** : <https://www.bradyresidential.com.au/lease/vic/inner-city/melbourne/residential/apartment/7805232>



**Rita Song**  
96031400



**Marie Gilantzis**  
03 9603 1400

**APARTMENT: 2801**

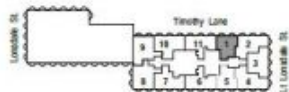
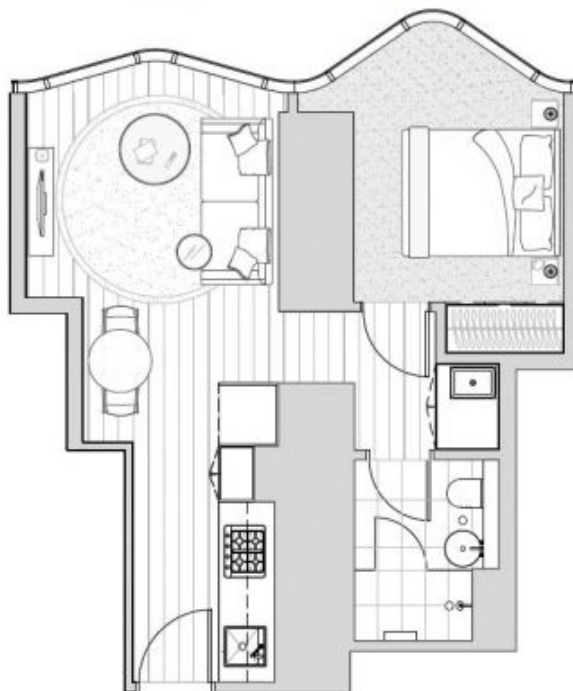
1 Bedroom & 1 Bathroom

Apartment Type A1

AREA: 41.4 m<sup>2</sup>

Bay 1 (4)

Bay 2 (7)



**INDIVIDUAL APARTMENT PLAN**

Plans are indicative and may be varied in accordance with Contract of Sale. Furniture depicted is not included. Refer to the Contract of Sale for included fixtures & fittings. Areas are calculated using the Property Council of Australia's Method of Measurement for Residential Property

Release: A Updated: 23/03/2017

