



312/406 La Trobe Street Melbourne VIC

1 1

Situated in the well sought-after Empire Apartments, a converted warehouse style building offers spacious living for the ideal CBD location.

View : <https://www.bradyresidential.com.au/lease/vic/inner-city/melbourne/residential/apartment/7807876>

The property is conveniently located close to trams, Flagstaff Train Station, Flagstaff Gardens, Queen Victoria Market, major universities and an assortment of eateries and shops which makes it the perfect city location.



Michael Carter
9603 1400



Spencer Xu
9603 1400

Property features:

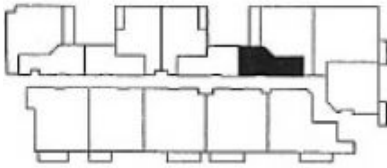
- Multi-purpose bedroom/living room plus dining complete with carpet through out
- Modern kitchen with stainless steel appliances with dishwasher and gas cooktop
- Bedroom/Lounge with built in robes
- Panel heating in living room/ Bedroom and Kitchen

Areas

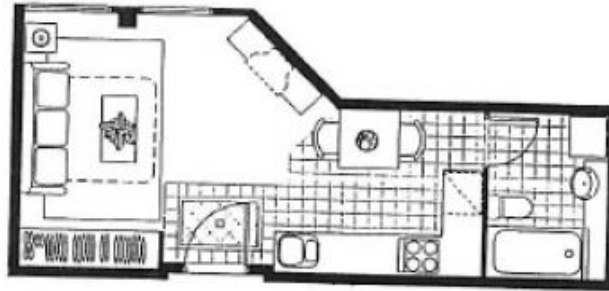
Total	
m ²	sf
30.0	323

Features

- Bedroom/Living
- Built-in-Robes
- Laundry Facilities
- Gas Cooktop
- Electric Oven
- TV & Telecom
- Security Intercom
- Security Entry



Third Floor Key Plan



EMPIRE
APARTMENTS

Apartment
312

406 LATROBE STREET MELBOURNE

