



3709/500 Elizabeth Street Melbourne VIC

1 1

This 37th floor apartment gives you the perfect location for lifestyle and leisure as well as being able to enjoy the views from your balcony providing lots of natural light.

View : <https://www.bradyresidential.com.au/lease/vic/inner-city/melbourne/residential/apartment/7896379>

Apartment features:

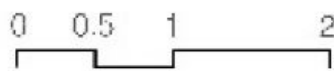
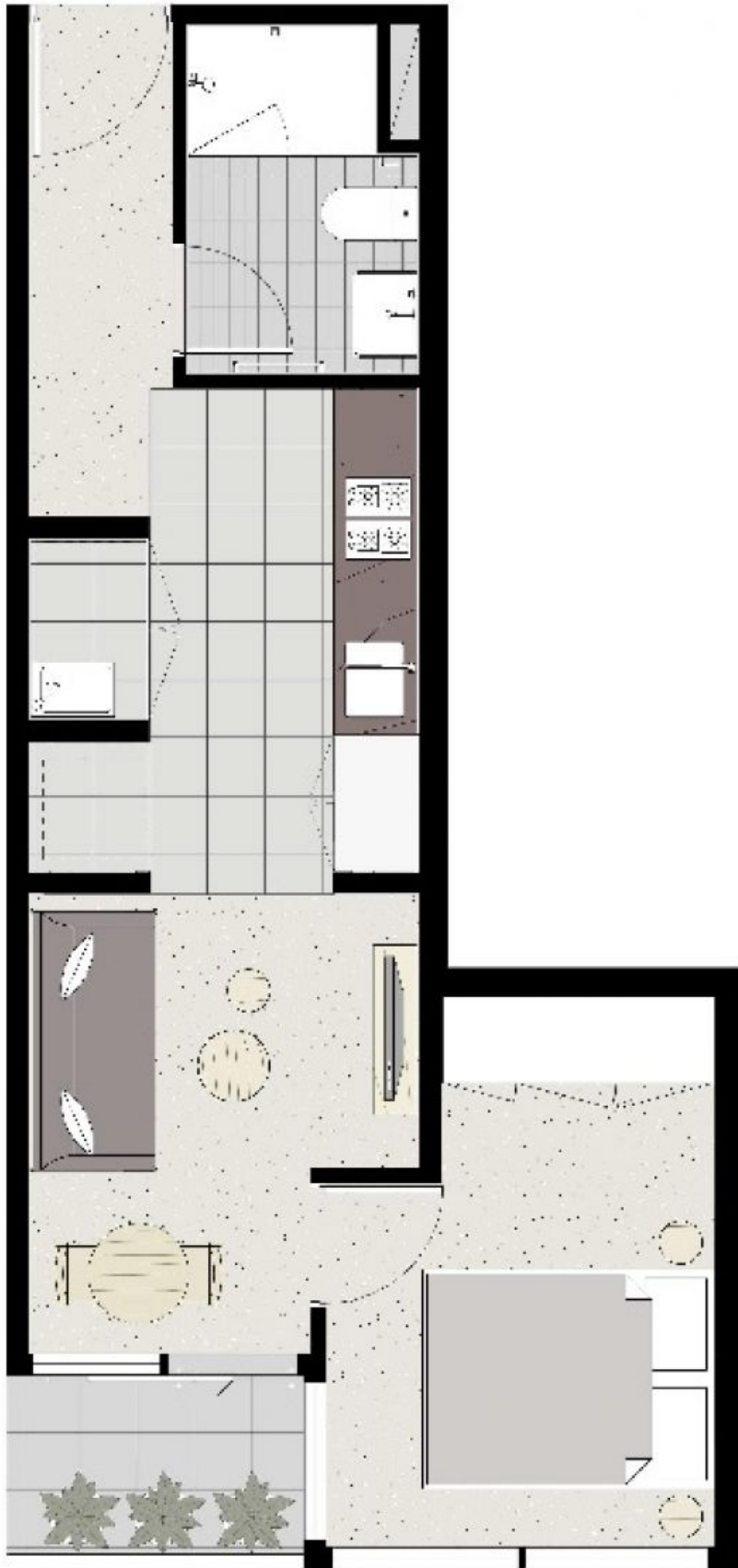
- Bedroom with built in robes
- Well-appointed kitchen which includes Miele stove and oven
- Caesar stone bench tops and plenty of storage throughout the kitchen
- Split system heating/cooling in lounge
- Double glazed windows
- Open plan living and dining with Balcony access
- Euro laundry
- NBN ready
- Please note this building has an embedded network for electricity Win Energy



Michael Carter
9603 1400



Jenny Xu
96031400



BRADY

This information is for marketing purposes only and is subject to variations as permitted in the contract of sale.