



**1804/371 Little Lonsdale Street Melbourne VIC**

**2  2 **

The unique interior and finish of this unfurnished residential apartment with its clean lines, flowing spaces and sophisticated palette, has been inspired by the architecture of Elenberg Fraser. 380 Melbourne elevates style, amenity and convenience to luxurious new heights.

**View** : <https://www.bradyresidential.com.au/lease/vic/inner-city/melbourne/residential/apartment/7901247>

NOTE: Include a carpark with apartment at \$900.00pw.

Situated in the absolute heart of the CBD, this apartment features;

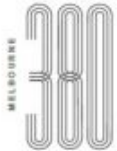
- ? Stylish and sleek kitchen with Miele appliances
- ? Spacious living dining area
- ? Two bedrooms with built in robes
- ? Two modern bathrooms with high-end finishes
- ? European laundry
- ? Heating and cooling (living area)
- ? Timber floors



**Tom Prior**  
9603 1400



**Marie Gilantzis**  
03 9603 1400

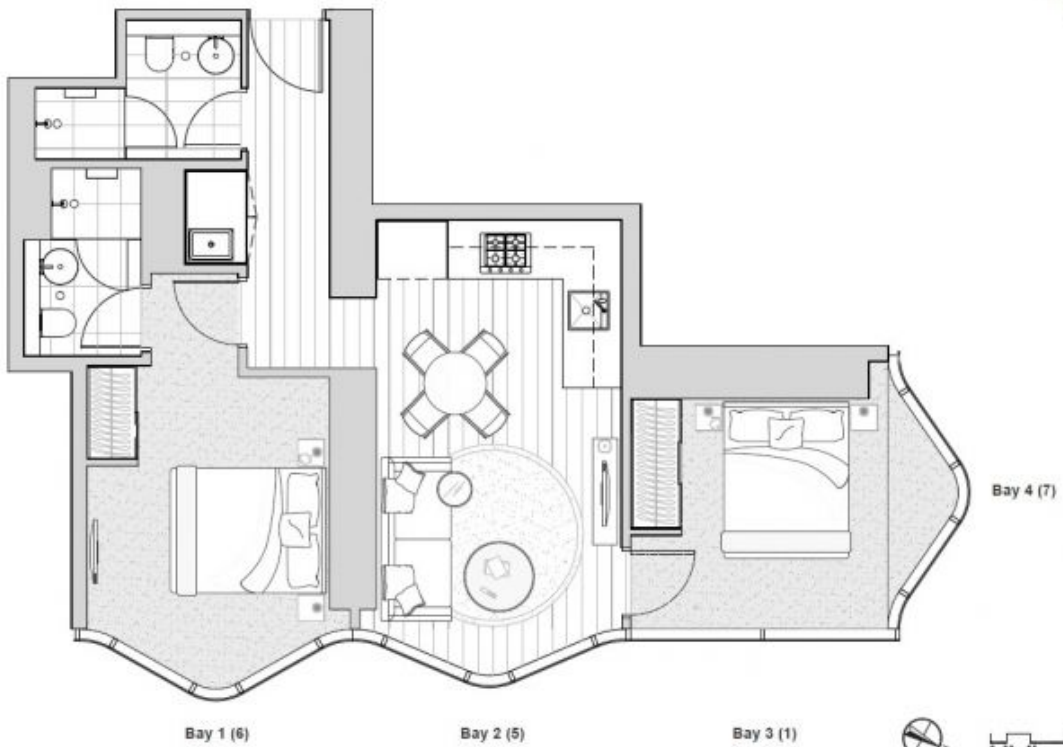


# APARTMENT: 1804

2 Bedroom & 2 Bathroom

Apartment Type C4\*

AREA: 64.1 m<sup>2</sup>

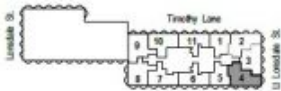


Bay 1 (6)

Bay 2 (5)

Bay 3 (1)

Bay 4 (7)



## INDIVIDUAL APARTMENT PLAN

Plans are indicative and may be varied in accordance with Contract of Sale. Furniture depicted is not included. Refer to the Contract of Sale for included fixtures & fittings. Areas are calculated using the Property Council of Australia's Method of Measurement for Residential Property.

Revision: A Updated: 03/03/2017

