

15/398 La Trobe Street Melbourne VIC

1 1

Step into a piece of Melbourne's past, a unique apartment residence nestled within a former brick office building, meticulously converted in 1998. With only 58 exclusive apartments spread across 5 storied levels, this urban gem offers a rare blend of timeless elegance and contemporary living.

Price : \$359,900 - \$395,000

View : <https://www.bradyresidential.com.au/sale/vic/inner-city/melbourne/residential/apartment/7936268>

Features that Set Us Apart from the Crowd:

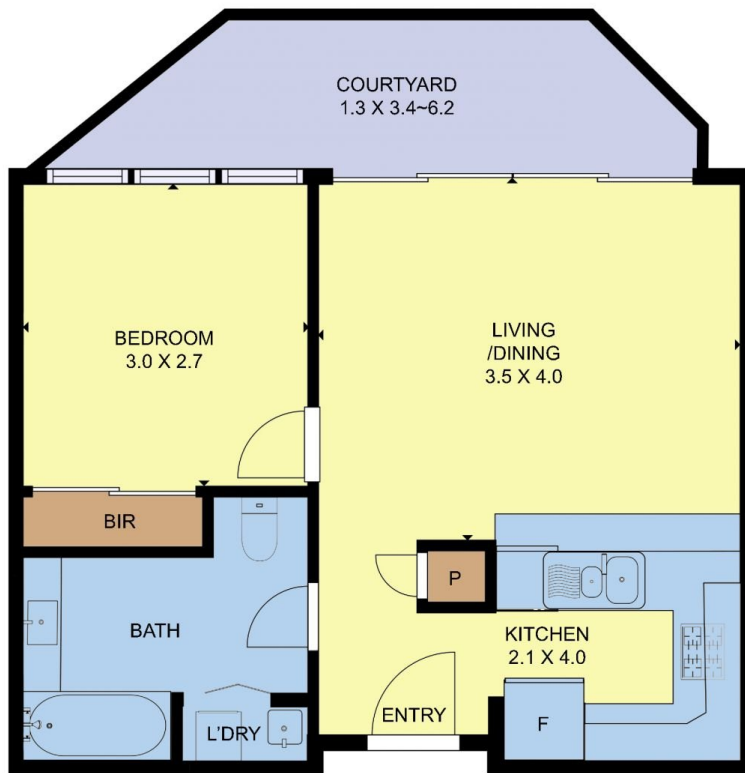
? Timeless Charm: Originally constructed in 1929, Citra exudes historic charm while boasting modern comfort for today's discerning resident.

? Sunlit Sanctuaries: Enjoy the tranquility of an east-facing orientation that floods each apartment with abundant sunlight and natural light, creating an inviting ambiance throughout the day.

? Spacious Sophistication: Soaring ceilings elevate every space, lending an air of grandeur and openness rarely



Helen Guo
03 9603 1400



This floor plan including furniture, fixture measurements and dimensions are approximate and for illustrative purposes only.
RESH Australia Pty Ltd gives no guarantee, warranty or representation as to the accuracy and layout. All enquiries must be directed to the agent, vendor or party representing this floor plan.

15/398 LA TROBE ST, MELBOURNE, VIC 3000