

3909/500 Elizabeth Street Melbourne VIC

1 1

This 39th floor apartment gives you the perfect location for lifestyle and leisure as well as being able to enjoy the views from your balcony providing lots of natural light.

View : <https://www.bradyresidential.com.au/lease/vic/inner-city/melbourne/residential/apartment/7952589>

Apartment features:

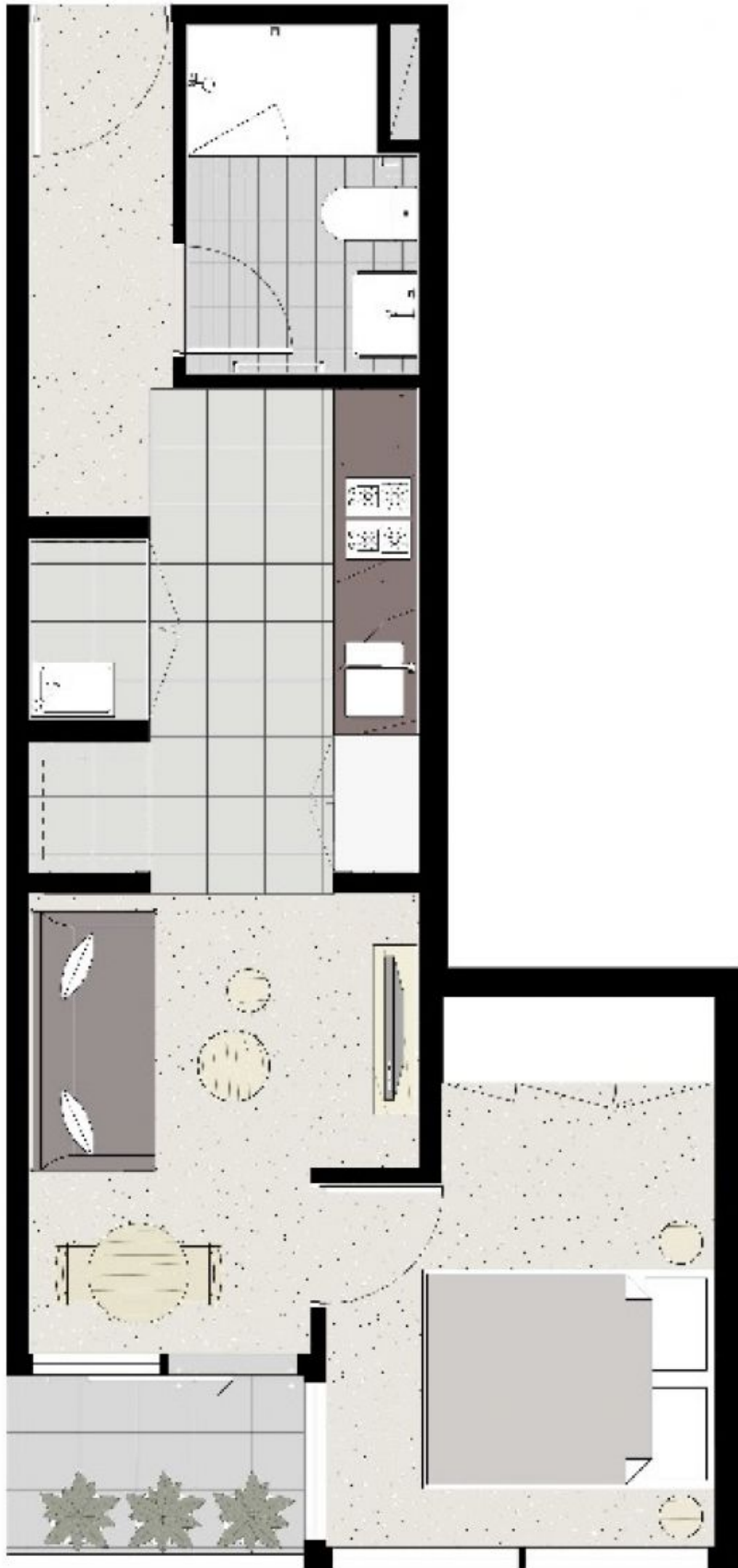
- Whitegoods Included (Fridge, Washer, Dryer)
- Bedroom with built in robes and queen-sized bed
- Well-appointed kitchen which includes Miele stove and oven
- Caesar stone bench tops and plenty of storage throughout the kitchen
- Split system heating/cooling in lounge
- Double glazed windows
- Open plan living and dining with Balcony access
- Euro laundry including a washing trough
- NBN ready
- Please note this building has an embedded network for



Tom Prior
9603 1400



Jenny Xu
96031400



BRADY

This information is for marketing purposes only and is subject to variations permitted in the contract of sale.