



1807/371 Little Lonsdale Street Melbourne VIC

2  1 

FURNITURE NOT INCLUDED-DISPLAY PURPOSE ONLY. The unique interior and finish of this residential apartment with its clean lines, flowing spaces and sophisticated palette, has been inspired by the architecture of Elenberg Fraser. 380 Melbourne elevates style, amenity and convenience to luxurious new heights.

View : <https://www.bradyresidential.com.au/lease/vic/inner-city/melbourne/residential/apartment/7984134>

Situated in the absolute heart of the CBD, this apartment features;

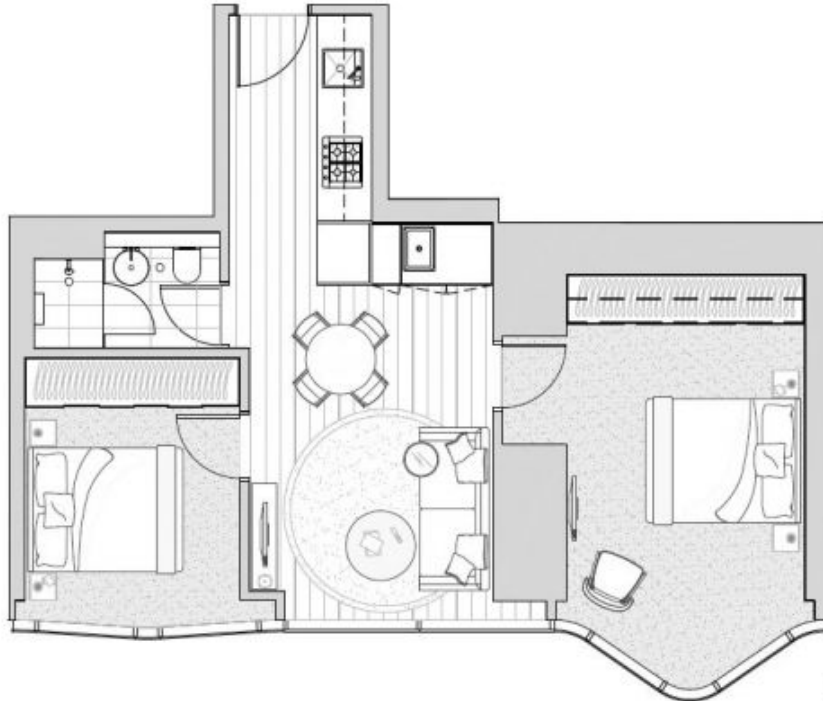
- ? Stylish and sleek kitchen with Miele Appliances
- ? Two bedrooms with built in robes
- ? Modern bathroom with high-end finish
- ? European laundry
- ? Heating and cooling (living area)
- ? Timber floors
- ? Security intercom access
- ? Concierge service (specified hours)



Tom Prior
9603 1400



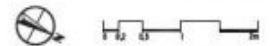
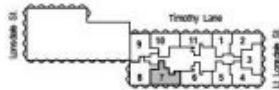
Marie Gilantzis
03 9603 1400



Bay 1 (2)

Bay 2 (1)

Bay 3 (7)



INDIVIDUAL APARTMENT PLAN

Plans are indicative and may be varied in accordance with Contract of Sale. Furniture depicted is not included. Refer to the Contract of Sale for included fixtures & fittings. Areas are calculated using the Property Council of Australia's Method of Measurement for Residential Property.

Revision: A updated: 09/02/17