



4203/371 Little Lonsdale Street Melbourne VIC

2  **2** 

380 Melbourne elevates style, amenity and convenience to luxurious new heights. Situated in the absolute heart of the CBD close to public transport, shopping centres, Queen Victoria market and RMIT and Melbourne University. The unique interior and finish of this residential apartment with its clean lines, flowing spaces and sophisticated palette, has been inspired by the architecture of Elenberg Fraser.

Apartment features:

- Stylish and sleek kitchen with Miele appliances, incl fridge, dishwasher and microwave
- Spacious living & dining area
- Two bedrooms with built in robes
- Two modern bathrooms with a high-end finishes
- European laundry, incl washer & dryer

Type : Apartment

View : <https://www.bradyresidential.com.au/lease/vic/inner-city/melbourne/residential/apartment/8208106>



Stella Grivas
9603 1400



Emma Luo
03 9603 1400

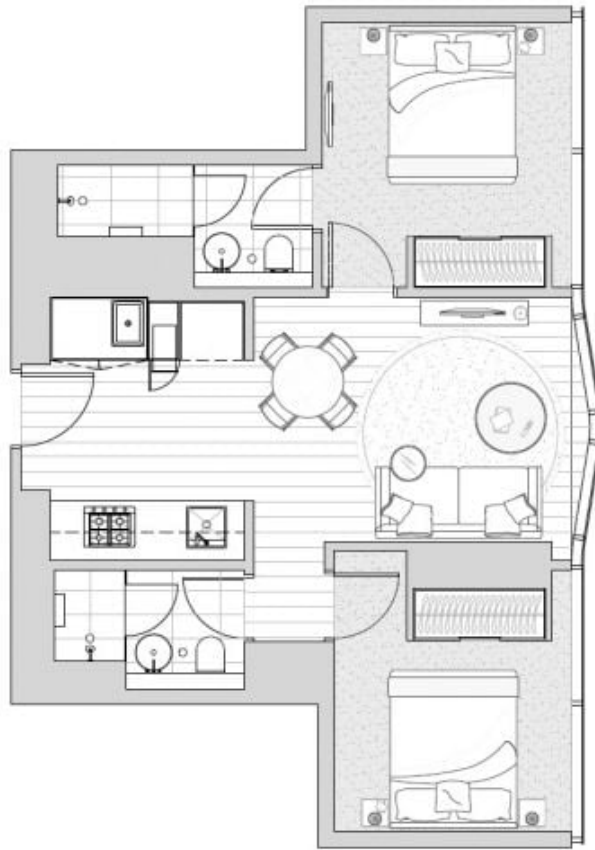
[For full version visit the website](https://www.bradyresidential.com.au)



APARTMENT: 4203

2 Bedroom & 2 Bathroom
Apartment Type C3.1

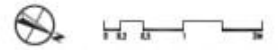
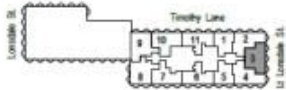
AREA: 61.7 m²



Bay 1 (1)

Bay 2 (3)

Bay 3 (1)



INDIVIDUAL APARTMENT PLAN

Plans are indicative and may be varied in accordance with Contract of Sale. Furniture depicted is not included. Refer to the Contract of Sale for included fixtures & fittings. Areas are calculated using the Property Council of Australia's Method of Measurement for Residential Property.
Revision: A Updated: 09/05/2017

