



5502/371 Little Lonsdale Street Melbourne VIC

2  **2** 

The unique interior and finish of this residential apartment with its clean lines, flowing spaces and sophisticated palette, has been inspired by the architecture of Elenberg Fraser. 380 Melbourne elevates style, amenity and convenience to luxurious new heights. Situated in the retail heart of the CBD, with some of Melbourne's finest restaurants & cafes at your doorstep, and easy access to universities.

Apartment Features:

- Stylish and sleek kitchen with Miele Appliances
- Spacious living dining area
- Two bedrooms with built in robes
- Two modern bathrooms with high-end finishes
- European laundry

Type : Apartment

View : <https://www.bradyresidential.com.au/lease/vic/inner-city/melbourne/residential/apartment/8217827>



Stella Grivas
9603 1400



Emma Luo
03 9603 1400

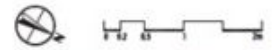
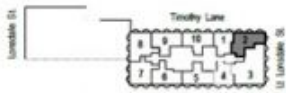
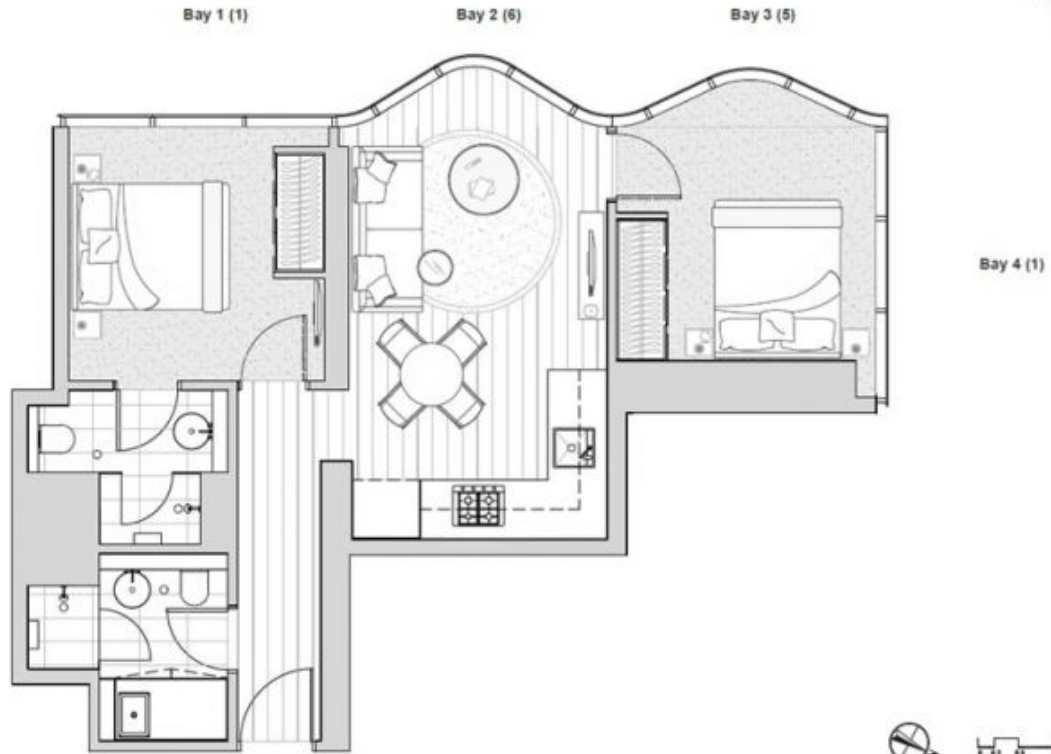
[For full version visit the website](https://www.bradyresidential.com.au)

APARTMENT: 5502

2 Bedroom & 2 Bathrooms

Apartment Type C2.1

AREA: 63.7 m²



INDIVIDUAL APARTMENT PLAN

Plans are indicative and may be varied in accordance with Contract of Sale. Furniture depicted is not included. Refer to the Contract of Sale for excluded fixtures & fittings. Areas are calculated using the Property Council of Australia's Method of Measurement for Residential Property.

Revision: A Updated: 09/02/17

