



1602/8 Downie Street Melbourne VIC

1 1 1

Perched on the 16th floor of the superbly central Eifel complex, this beautiful oversized one-bedroom apartment is a stunning showcase of north-facing contemporary urban living. Generously proportioned, this stylish retreat offers a seamless blend of comfort and sophistication in a dynamic city location.

Step into a wide-reaching open-plan living and dining area, complemented by a sleek, stone-finished kitchen featuring a pull-out pantry and a full-sized dishwasher. The expansive bedroom boasts wall-to-wall mirrored built-in robes, while the deluxe bathroom impresses with a smartly tiled shower, mirrored cabinetry, and a stone-topped vanity.

Extending the width of the apartment, a private undercover

Type : Apartment
Price : \$395,000 - \$410,000
View : <https://www.bradyresidential.com.au/sale/vic/inner-city/melbourne/residential/apartment/8264123>

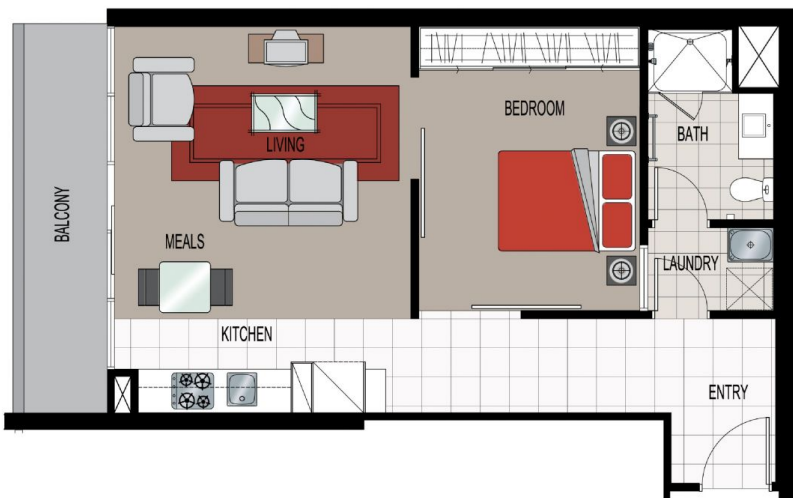


Tom Prior
9603 1400



Jared Jin (é†æ~±æ^•)
9603 1400

[For full version visit the website](https://www.bradyresidential.com.au)



NOT TO SCALE

DOWNIE STREET
APARTMENTS

- D13.02
- D14.02
- D15.02
- D16.02
- D17.02
- D18.02
- D19.02
- D20.02



APARTMENT TOWERS
550 FLINDERS STREET, MELBOURNE

Apartment Description			
Total		Balcony	
sqm.	sqft.	sqm.	sqft.
61.7	664	7.1	76



APARTMENT TYPE 'J' LOCATION

BRADY

DESIGN ■ DEVELOPMENT ■ CONSTRUCTION



REVISION: 28/04

366 Latrobe Street
Melbourne Australia 3000

Telephone: (03) 9329 3699 Facsimile: (03) 9329 3677
e-mail: marjam@bradygroup.com.au