

4005/371 Little Lonsdale Street Melbourne VIC

1 1

The unique interior and finish of this residential apartment with its clean lines, flowing spaces and sophisticated palette, has been inspired by the architecture of Elenberg Fraser. 380 Melbourne elevates style, amenity and convenience to luxurious new heights.

Type : Apartment

View : <https://www.bradyresidential.com.au/lease/vic/inner-city/melbourne/residential/apartment/8613709>

Situated in the absolute heart of the CBD, this apartment features;

- Stylish and sleek kitchen with Gaggenau Appliances
- Spacious living dining area
- One bedroom with built in robes
- Modern bathroom with a high-end finish
- European laundry (washing machine only)
- Heating and cooling (living area)
- Timber floors



Maria Huang
+613 9603 1400



Spencer Xu
+613 9603 1400

[For full version visit the website](https://www.bradyresidential.com.au)

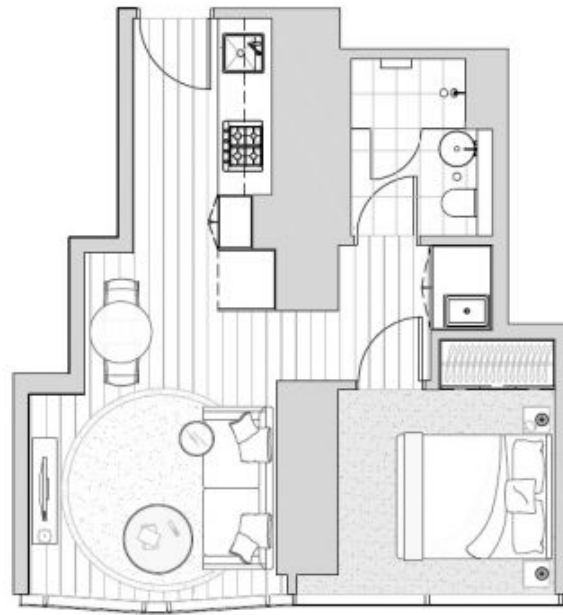


APARTMENT: 4005

1 Bedroom & 1 Bathroom

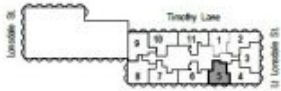
Apartment Type A1.1*

AREA: 39.1 m²



Bay 1 (2)

Bay 2 (1)



INDIVIDUAL APARTMENT PLAN

Plans are indicative and may be varied in accordance with Contract of Sale. Furniture depicted is not included. Refer to the Contract of Sale for included fixtures & fittings. Areas are calculated using the Property Council of Australia's Method of Measurement for Residential Property.

Revision: A Updated: 03/03/2017

