



713/55 Queens Road Melbourne VIC

3  2  2 

* Enter from Beatrice Street* Cutting edge in design, this double storey first class residence incorporates luxury across 2 levels, featuring 3 bedrooms, 2 bathrooms and tandem carpark. Designed to make use of breath taking views this home is a easy living experience.

Type : Apartment

Price : \$1160 pw

View : <https://www.bradyresidential.com.au/lease/vic/inner-city/melbourne/residential/apartment/8674566>

Downstairs features the master bedroom with built in robes and an ensuite, Upstairs has 2 bedrooms both with robes, central bathroom with shower over bath, European laundry, spacious open plan living & dining, modern kitchen with stainless steel appliances (including dishwasher) and stone bench tops, a spacious balcony with a great park view. It also features floorboards in living and dining area, heating & air conditioning and security intercom. A fridge, microwave and washing machine is included. in



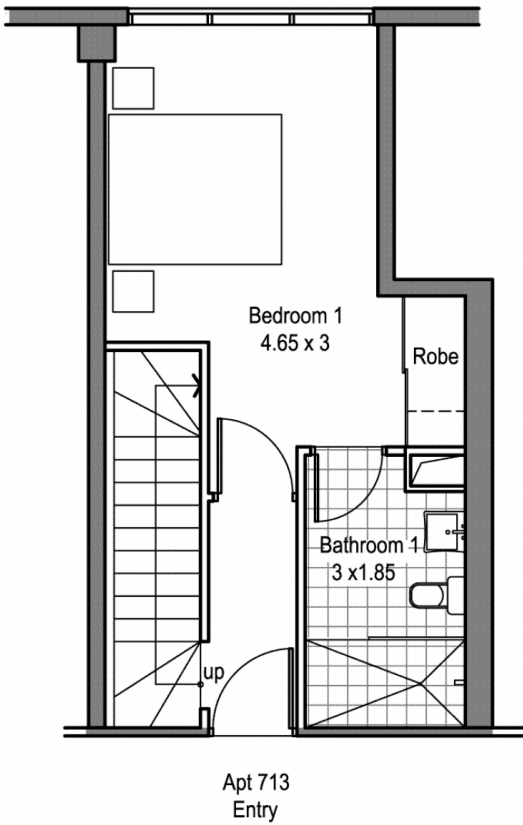
Anthony Staniscia
+613 9603 1400



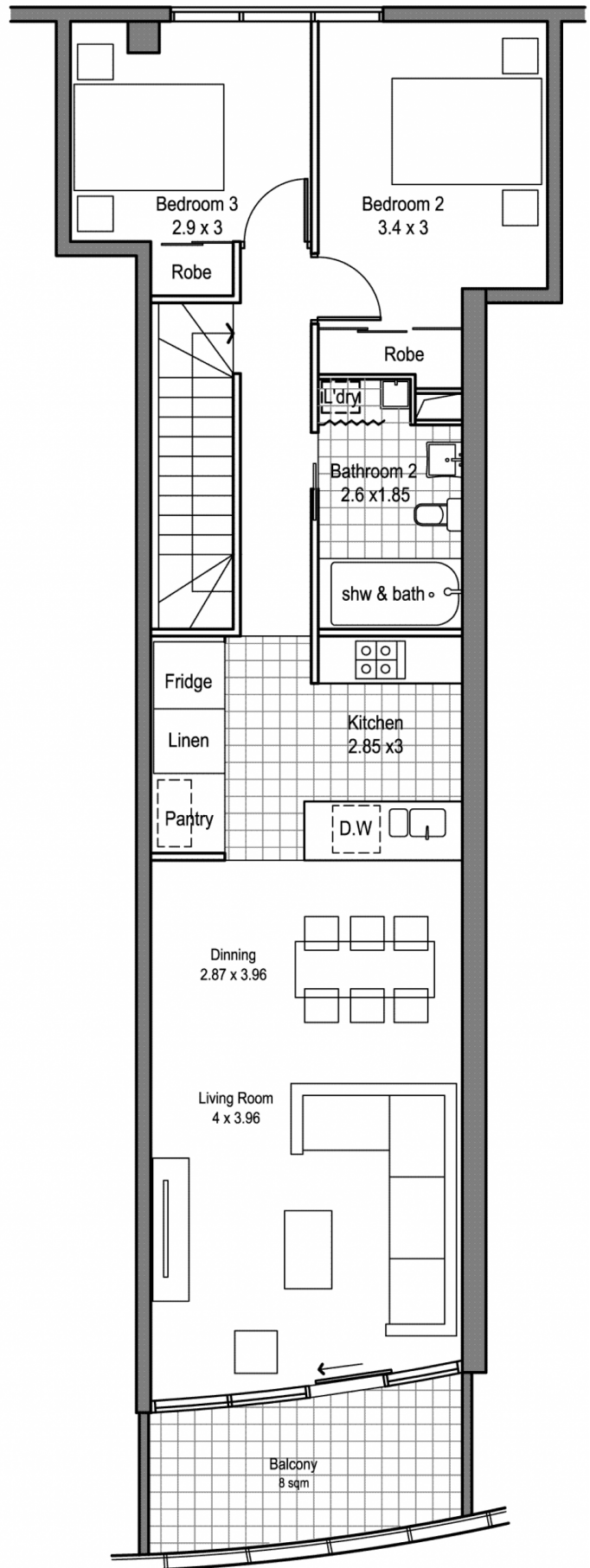
Julie Bisping
+613 9603 1400

[For full version visit the website](https://www.bradyresidential.com.au)

713 / 55 Queens Road, Melbourne 3004



Ground Floor



First Floor

Internal Area: 108 sqm
Balcony Area: 5 sqm
Total Area: 113 sqm



Note: Every precaution has been taken to verify the accuracy of the above details. However, prospective purchasers are advised to make their own enquiries. There is no warranty to the above and expressly disclaims all liability for any loss or damage, whatever the cause which may arise from any person acting on any such statements.