



## 310/399 Bourke Street Melbourne VIC

1 1

Positioned within the iconic The Foundry building, Apartment 310/399 Bourke Street presents a rare opportunity to secure a beautifully maintained residence featuring a unique 1-bedroom layout-seldom offered and highly sought after within the building.

Showcasing soaring ceilings and timeless heritage charm, the apartment has been thoughtfully updated with brand-new flooring, enhancing its already impressive sense of space and style. The light-filled living and dining area offers a comfortable and versatile layout, complemented by a well-appointed galley kitchen featuring quality appliances and ample storage.

The generously sized bedroom includes built-in robes,

[For full version visit the website](https://www.bradypressidential.com.au)

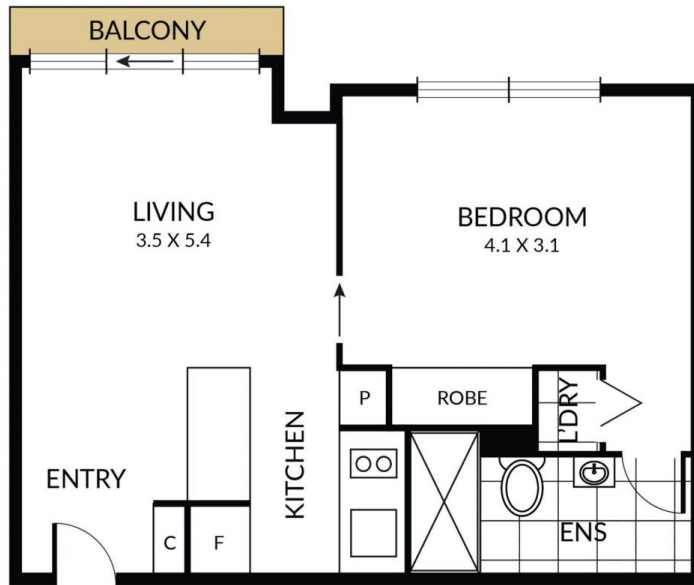
**Type** : Apartment  
**Price** : \$290,000 - \$315,000  
**View** : <https://www.bradypressidential.com.au/sale/vic/inne-r-city/melbourne/residential/apartment/8675612>



**Madison Healy**  
+613 9603 1400



**Tom Prior**  
+613 9603 1400



Floorplan is for illustrative purposes only. All dimensions are approximate and subject to variation. Interested parties should make their own enquiries and verify accuracy to their own satisfaction.