

2303/8 Downie Street Melbourne VIC

1 1

Positioned high on Level 23 of the sought-after Eifel complex, Apartment 2303 delivers an exceptional inner-city lifestyle defined by vibrant interiors, abundant natural light, and true turnkey appeal. Showcasing striking bright feature walls throughout, this stylish one-bedroom residence offers a fresh and modern edge, perfect for owner-occupiers and investors alike.

Step inside to a sun-filled open-plan living and dining area, where floor-to-ceiling windows invite in natural light and frame sweeping city views. The space flows effortlessly onto a generous private balcony-ideal for entertaining or unwinding above the energy of Melbourne's CBD.

The sleek galley kitchen is appointed with stone benchtops,

Type : Apartment
Price : \$330,000 - \$360,000
View : <https://www.bradyresidential.com.au/sale/vic/inner-city/melbourne/residential/apartment/8684978>



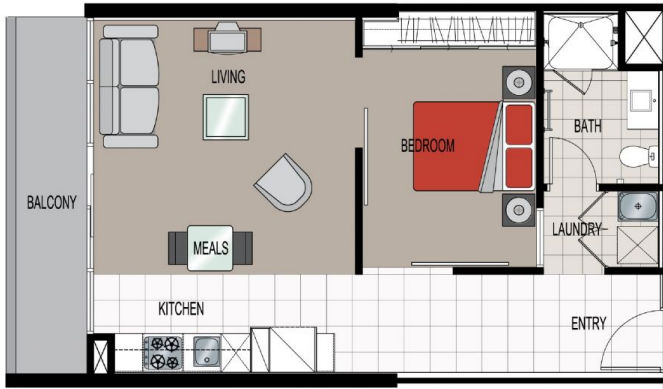
Tom Prior
+613 9603 1400



Madison Healy
+613 9603 1400

[For full version visit the website](https://www.bradyresidential.com.au)

<https://www.bradyresidential.com.au>



NOT TO SCALE

**DOWNE STREET
APARTMENTS**

D23.03 D26.03
D24.03 D27.03
D25.03 D28.03



APARTMENT TOWERS
550 FLINDERS STREET, MELBOURNE

Apartment Description			
Total		Balcony	
sqm.	sqft.	sqm.	sqft.
58.5	630	7	75



APARTMENT TYPE 'K2' LOCATION

BRADY

DESIGN ■ DEVELOPMENT ■ CONSTRUCTION



REVISION: 201504

396 Latrobe Street
Melbourne Australia 3000

Telephone: (03) 9329 3659 Facsimile: (03) 9329 3677
e-mail: marian@bradygroup.com.au